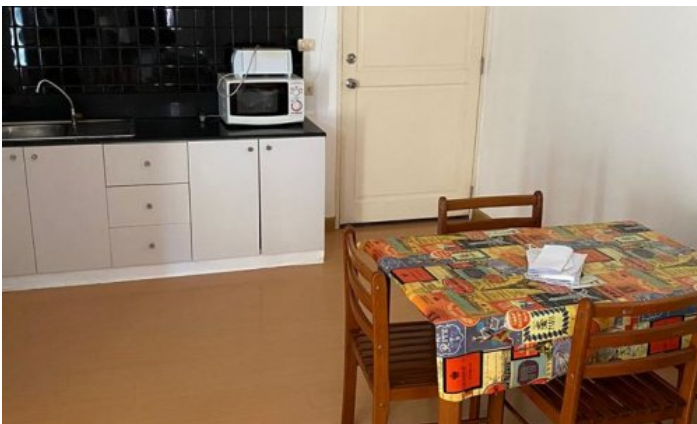


ID4025 □□, □□□□



**Price 2 500 000 THB (0 USD)**

□□	□□	□□□□	59 523 THB
□□□□□	□□	□□□□ □□□	60 THB
□□	Completed	□□	□□□□
□□□□	2006	□□□	7
□□□ □	1400	□□	□□□□□
□□	□□	□□□	Private person
□□	1	□□	Leasehold
□□□□ □□□□□	42		





Patong Loft condominium is a popular condominium among tourists. All apartments are spacious, studios from 42m<sup>2</sup>, 1-bedroom 60m<sup>2</sup>, 2-bedroom 85m<sup>2</sup>. Although the condominium is located close to entertainment venues, there is always a calm atmosphere conducive to relaxation.

### **Infrastructure**

24-hour security, large outdoor pool, taxi service, parking, elevator.

### **What's nearby**

The complex is located in the northern part of Patong, just a 15-minute walk from the beach, Jungceylon Shopping Center and the famous Bangla Road nightlife, full of bars, restaurants, clubs and entertainment venues. There is absolutely everything from beach activities in Patong: jet skis, bananas, parachutes, kayak, paddle and surfboard rental. There are also volleyball nets on the beach for fans of this team game. Bangla is home to the largest discotheque in Phuket - Illusion. For lovers of club life, there are two floors, a large dance floor and VIP rooms. The nightclub features famous international DJs and great shows. Worldwide restaurants, including the popular Hard Rock Café. There are Thai food stalls and fruit stalls, fresh juices and fresh juices, massage parlours, convenience stores and 7-Eleven shops. A little further in the depths of Patong, the Jungceylon shopping centre is open, with stores of both national Thai and world brands. On its territory there is also a department store "Robinson" and "Big C". And opposite Jungceylon, next to Bangla Road, a new Central Festival was opened.

### **For whom is it suitable**

Patong Loft Condo is a great choice to explore Phuket or just relax and recharge. One of the options that will surely satisfy your needs if you are considering buying a property for investment or for a long stay.